

P-7 DREDGE SLEEVES

P-72 SAND SUCTION

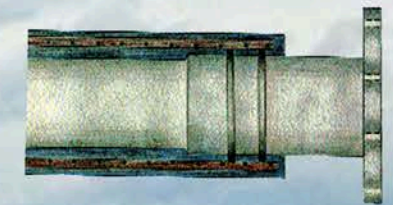
Price Rubber		3/8" Tube		1/2" Tube		3/4" Tube	
ID	PLY	Wt/Ft	OD	Wt/Ft	OD	Wt/Ft	OD
4 1/2"	3	5.3	6.0	6.2	6.3	7.9	6.8
6 5/8"	4	9.0	8.3	10.3	8.6	12.9	9.1
8 5/8"	4	13.1	10.6	14.8	10.8	18.2	11.3
10 3/4"	5	18.1	12.9	20.2	13.1	24.4	13.6
12 3/4"	6	23.6	15.1	26.1	15.4	31.1	15.9
14"	7	28.3	16.6	31.0	16.8	36.5	17.3
16"	8	35.0	18.8	38.1	19.0	44.4	19.5
18"	9	42.3	21.0	45.9	21.2	53.0	21.5
20"	10	49.8	23.3	53.9	23.5	62.0	23.8

Price Rubber		3/8" Tube		1/2" Tube	
ID	PLY	Wt/Ft	OD	Wt/Ft	OD
4 1/2"	3	6.4	6.3	7.3	6.6
6 5/8"	4	10.8	8.7	12.1	9.0
8 5/8"	4	16.5	11.1	18.2	11.3
10 3/4"	5	22.3	13.4	24.5	11.6
12 3/4"	6	28.6	15.6	31.1	15.9
14"	7	33.8	17.1	36.5	17.3
16"	8	41.3	19.3	44.4	19.5
18"	9	49.4	21.5	52.9	21.7
20"	10	55.6	23.7	59.1	23.9

BUILT-IN-NIPPLES AND FLANGES

Pipe	OD	OD
4	4.5	9
5	5.5	10
6	6.5	11
8	8.5	13.5
10	10.75	16
12	12.75	19
Tube		
14	14	21
16	16	23.5
18	18	25.125

UP TO 150 PSI WORKING PRESSURE EITHER STYLE!



CHAIN & CLAMP ACCESSORIES!

(D3) CHAIN CLAMPS



FOR LARGER DIAMETER HOSES,
6' CHAIN CLAMP WITH ADJUSTING HEX NUT.

(D31) DOUBLE BOLT CLAMPS



HOSE CLAMPS FOR LARGE SUCTION AND DISCHARGE SERVICE...
MALLEABLE IRON CADMIUM PLATED!

Size	Range"	Lbs / Ea.
600	5.31" - 6.06"	2.48
675	6.13" - 6.88"	2.50
769	6.94" - 7.63"	3.86
818	7.69" - 8.19"	4.94
875	8.25" - 8.88"	5.13
988	8.94" - 9.88"	5.52
1125	9.94" - 11.38"	8.08
1275	11.44" - 13.00"	9.04
1360	12.19" - 14.00"	14.90
1450	13.06" - 15.00"	16.65
1700	15.06" - 17.25"	20.85